

# MX9 Ultra Rugged Handheld



## HANDHELD COMPUTERS

All-range scanning allows for barcode data capture from 4 in. to 40 ft. (102mm - 12m).

Brilliant outdoor display offers crystal-clear viewing in full-sun and dimly-lit environments.

Removable, easy-grip handle comes with two-finger trigger and molded rubber grip for long shifts of scanning.

62-key alpha-numeric or 38-key numeric-alpha backlit keyboards available. Both include durable, in-molding design.

Market leading Windows® CE 5.0 Professional OS.



Equipped with GPS receiver.

WWAN radio enabled with GSM/GPRS/ EDGE.

High performance 802.11 a/b/g radio with Bluetooth® option for mobile connectivity to your enterprise network.

10 single-touch function keys with fully mappable keyboard for customization - allows for one-click access to specific application functions.

Ultra rugged handheld is IP67 rated and operates in challenging environments from -4°F to 122°F (-20°C to 50°C).

## LXE is RUGGED MOBILE COMPUTERS.

### The Ultra Rugged Handheld

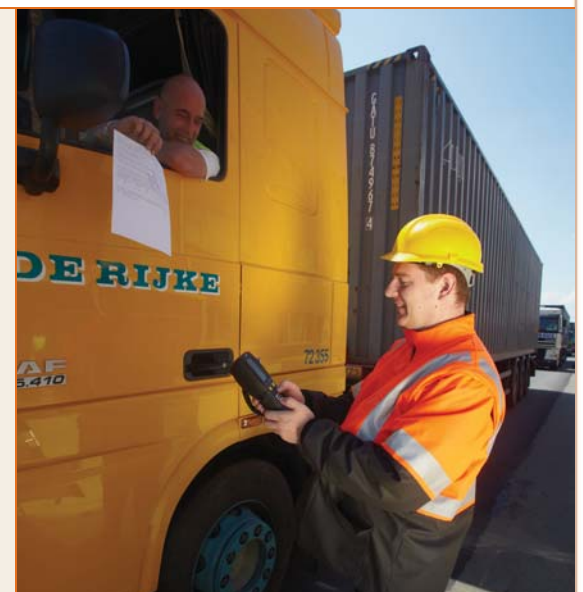
What makes the MX9 an Ultra Rugged Handheld? A host of features including an IP67 rating, 6 ft. drop tests to concrete, and the 2,000 cycle 1meter tumble test make this LXE handheld ready for the most rugged environments imaginable. From built-in heaters for cold environments to brilliant outdoor displays for full-sun environments, the MX9 can handle just about anything.

The MX9 ships with a PXA 320 processor and industry leading Windows CE5.0 Professional. Options include WWAN with GPS receivers, choice of backlit keyboards, built-in heaters and more. Data collection in any environment is no challenge for the MX9, the most advanced ultra rugged handheld in the industry.

### Built by LXE for tough environments

The MX9 is perfect for use in ports and intermodal applications, outdoor logistics operations, cold storage, and any harsh environment where data collection is needed. Don't let it's rugged exterior fool you - the MX9 is intelligent, flexible, and dependable.

And the MX9 is supported by LXE's award-winning support team, winners of the Mobile Star Award™ for best customer service six years in a row.



125 Technology Parkway Norcross, GA 30092 1-800-664-4593 www.lxe.com

# MX9

## Technical Specifications



### PROCESSING & MEMORY

- PXA320, 800MHz
- 128MB SDRAM
- 128MB Flash
- SD expansion card to 4GB

### OPERATING SYSTEM

- Windows® CE 5.0 Professional
- Non-volatile storage of resident drivers, applications and settings

### OPTIONAL SOFTWARE

- RFTerm® (TN5250, TN3270, VT220)
- Aplock utility controls user application access & unwanted configuration changes
- Multiple localized languages
- Wavelink Avalanche and LXE eXpress Config

### APPLICATION DEVELOPMENT

- Free SDK available through LXE's Developer Portal at <http://www.lxe.com/developer>
- Sample code for each API call
- Complete example applications
- Developer related FAQs

### KEYBOARD

- Backlit keys
- 38-key numeric-alpha or 62-key alpha-numeric
- 10 dedicated function keys + user defined keys
- Fully keyboard mapping support
- TN5250 emulation overlay option on 62-key
- Durable, in-mold design

### DISPLAY

- 3.7" (94 mm) color QVGA
- Outdoor readable, transreflective
- Resistive touchscreen with stylus

### POWER SUPPLY & MANAGEMENT

- Full shift battery life with typical usage
- Fast recovery backup power for data retention
- Main battery low warning
- Active power management (configurable)

### INTERFACES

- USB Host & Client
- Powered RS-232
- Ethernet
- In-terminal charging
- Microphone
- Speaker with adjustable volume control
- Large scan status LEDs & power status LEDs

### RADIO SUPPORT

- 802.11 b/g
- 802.11 a/b/g
- Internal diversity antenna
- Bluetooth® 2.0 + EDR
- WPA or WPA2 security
- WWAN, GSM/GPRS
- GPS receiver
- Cisco® CCXv4 certified

### ENCLOSURE

- Weight: 2.1 lbs. (34 oz.) with scanner, 802.11, Bluetooth and handstrap
- Dimensions: 9.9" x 3.9" x 2.7" (251mm x 99mm x 69mm)
- User replaceable battery
- Rubber overmold

### ENVIRONMENTAL

- Operating temperature: -4° to +122°F (-20° to +50°C)
- Storage temperature: -4° to +158°F (-20° to +70°C)
- Humidity: 5 to 95% non-condensing,
- Drop: 6 ft. (1829 mm) to concrete
- Tumble: 2,000, 1m tumble test
- IP Rating: IP67
- MIL STD 801F

### APPROVALS

- Emissions: (EMI)  
FCC Part 15, Subpart B, Class A;  
EN 55022, Class A (CISPR 22)
- Immunity: (EMC)  
EN 55024:1998
- Safety:  
UL 60950-1, CSA  
C22.2 No. 60950-1, EN 60950, IEC 60950
- Laser Safety:  
21 CFR 1040.10, IEC 60825-1
- Battery Safety:  
UL 2054, IEEE 1725
- Hazardous Locations:  
Class 1, Div-2, Groups ABCD with NRTL mark  
ISA 12.12.01, CSA C22.2#213
- Radio:  
FCC Part 15 subpart C, IC RSS210, 102,  
EN 300 328, China SRRC, Singapore IDA,  
Malaysia SIRIM
- Radio Safety:  
FCC O.E.T. Bulletin 65  
Industry Canada RSS 102, EN 50360

### BAR CODE

- Standard range laser
- All-range laser (4 in. - 40 ft.) (102mm - 12m)
- 2D Imager
- Successful scan vibration signal and easy view scan LEDs
- Full symbology support
- Image capture, VGA

### ACCESSORIES

- Trigger handle
- USB and RS-232 adapter cables
- Desktop cradle with spare battery charging & Ethernet
- Active vehicle cradle
- 4-slot battery charger
- Vehicle power port adapter
- Carry case for MX9 with handle
- Carry case for MX9 without handle
- Holster for MX9 with handle



ORACLE PARTNER

